

Watersheds in the Baltimore Region

Exploring Local Data

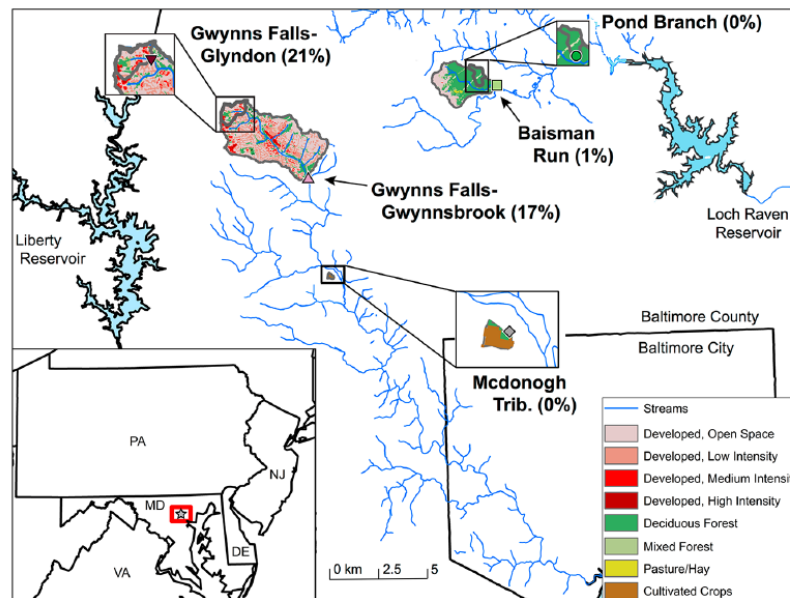


Figure 1. Map of study watersheds, including land cover, located in the middle Atlantic region of the United States and part of the Baltimore Ecosystem Study (BES), Long-term Ecological Research site. Blue lines represent major streams. Watersheds have impervious surface cover (ISC) ranging from 0 to 21% with values of 0% for forested Pond Branch (POBR) and agricultural McDonogh (MCDN), 1% for Baisman Run (BARN), 17% for Gwynns Falls–Delight (GFGB), and 21% for Gwynns Falls–Glyndon (GFGL). Symbols are at the outlets of each watershed. Watershed characteristics are summarized in Table S1.

Source: Bird, Darcy L., PM Groffman, CJ Salice, J Moore. (2018). Steady-State Land Cover but Non-Steady-State Major Ion Chemistry in Urban Streams. *Environmental Science and Technology*. 14:31:55

Pondbranch



Pond Branch

Gwynnbrook



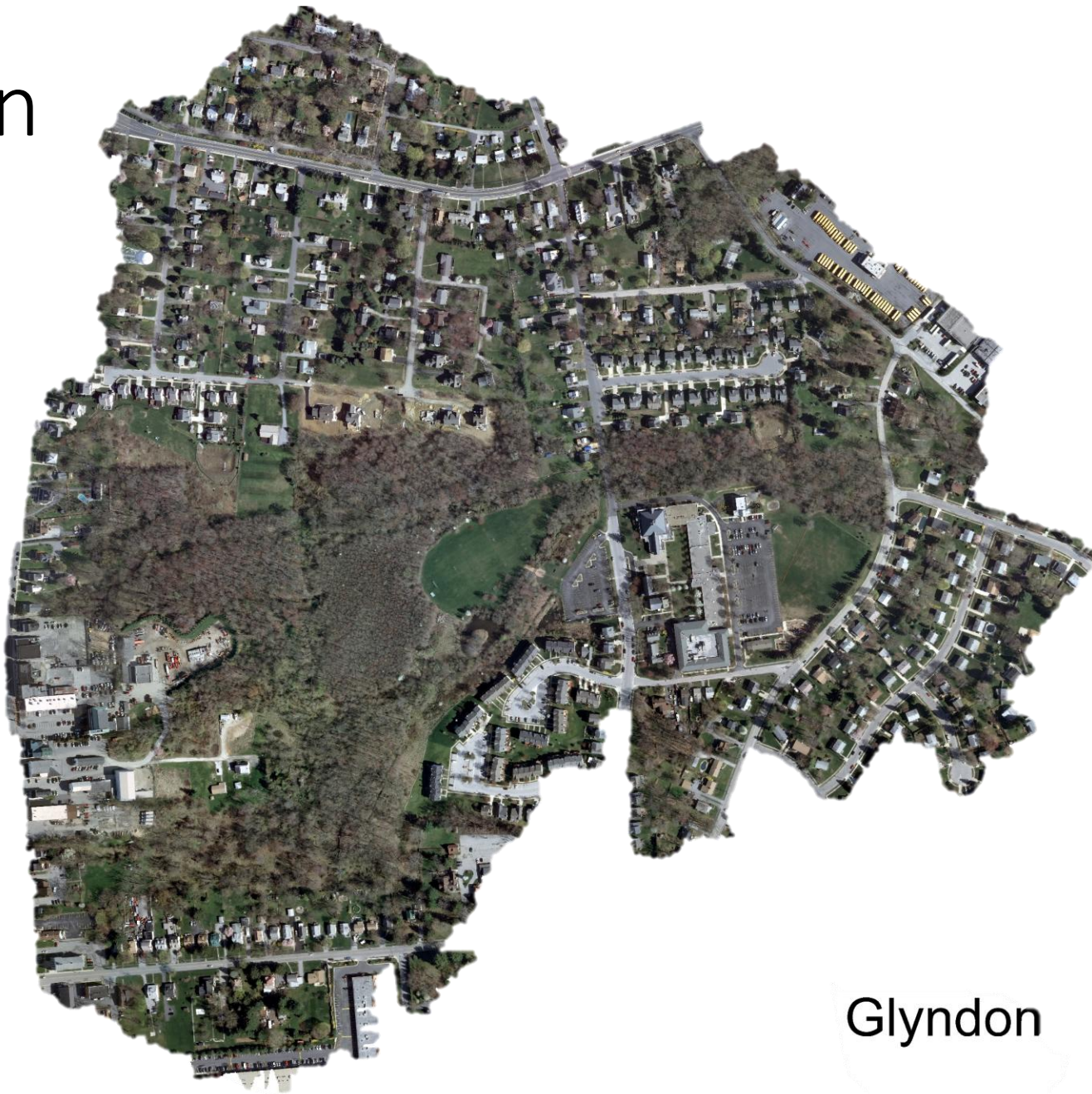
Gwynnbrook

Baisman



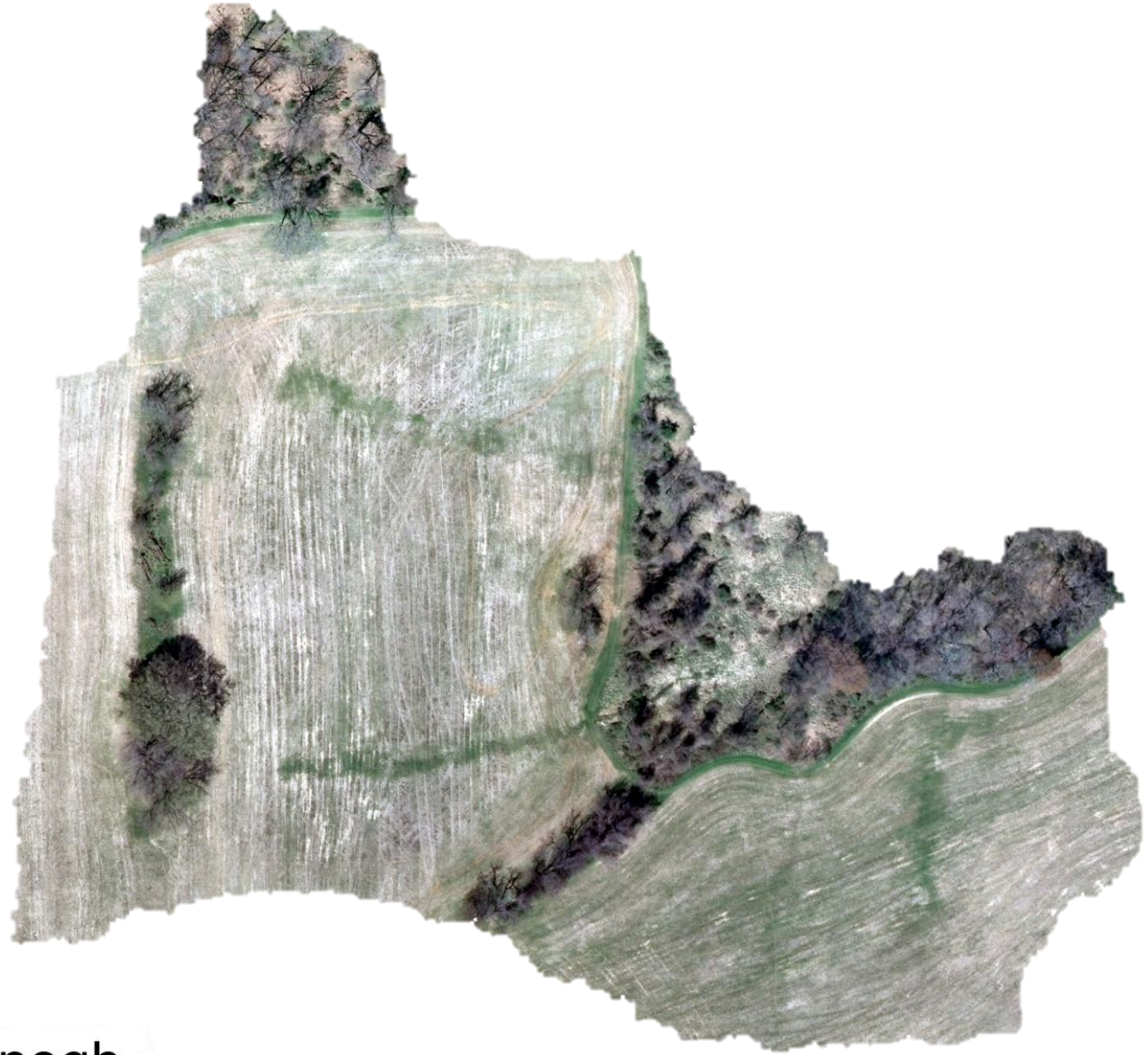
Baisman Run

Glyndon



Glyndon

McDonogh



McDonogh